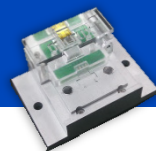




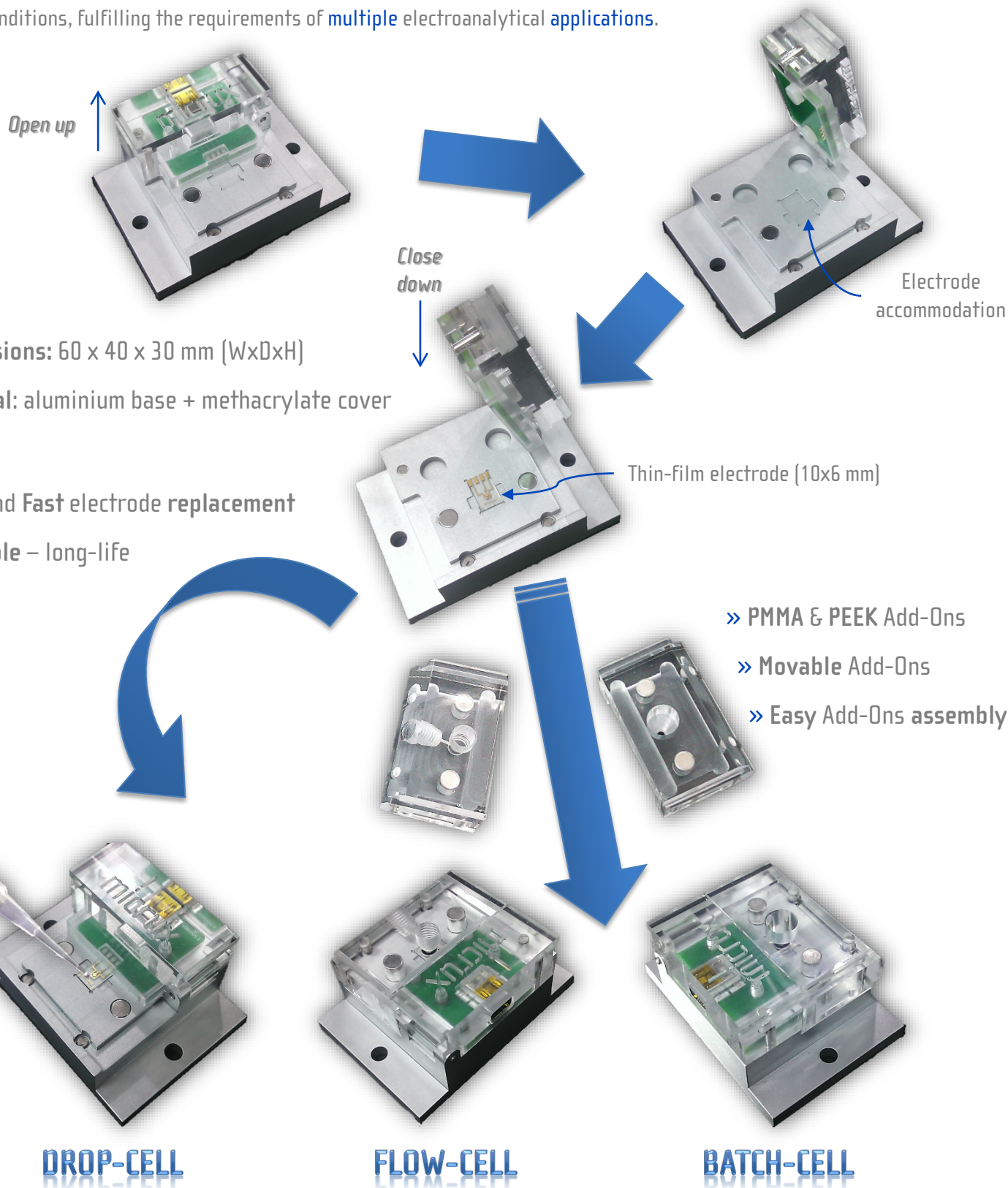
All-in-One platform for
thin-film electrodes



The innovative **All-in-One cell** (Ref. **ED-AIO-CELL**) provides an **unique multipurpose** interface with **movable add-ons** that can be easily **interchanged** for using the thin-film (micro)electrodes supplied by MicruX Technologies.

» AIO-cell general features

The **AIO-cell** enables the use of the thin-film (micro)electrodes in **static** (*Drop / Batch-cell*) or **dynamic** (*Flow-cell*) conditions, fulfilling the requirements of **multiple** electroanalytical **applications**.



- » **Dimensions:** 60 x 40 x 30 mm (WxDxH)
- » **Material:** aluminium base + methacrylate cover
- » **Easy and Fast electrode replacement**
- » **Reusable – long-life**

- » **PMMA & PEEK Add-Ons**
- » **Movable Add-Ons**
- » **Easy Add-Ons assembly**

All-in-One Platform



The **All-in-One cell** is provided in two basic versions, the *base cell + one add-on* (*Ref. ED-AIO-CELL-1x*) or the *base cell + two add-ons* (*Ref. ED-AIO-CELL-2x*). Additional **add-ons** can be supplied with the base cell or by separated and they can be **customized** (design & materials) taking into account the specific requirements of the customers.

» AIO-cell specific Add-ons features

» Drop-cell (base cell)



The **drop-cell** provides a true user-friendly and robust interface with the instrumentation, enabling the use of microvolume (**1 – 10 μ L sample drops**) with all standard (10 x 6 mm) thin-film (micro)electrodes. The drop-cell includes the basic assembly parts for the different add-ons.

» Batch-cell Add-ons



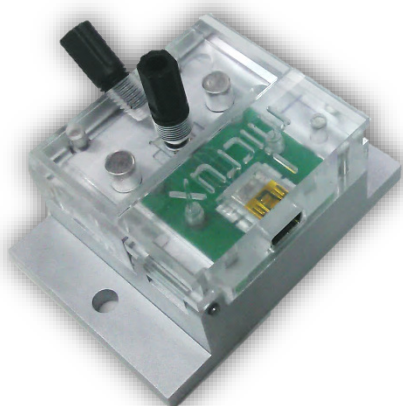
The **batch-cell** add-on enables the use of the standard (10 x 6 mm) thin-film (micro)electrodes in applications (batch analysis, standard additions, etc...) in which are required larger **sample volume** up to **400 μ L**.



» Flow-cell Add-ons



The **flow-cell** add-ons enable the use of standard (10 x 6 mm) thin-film (micro)electrodes as EC detection system in **flowing liquids** such as FIA, HPLC, CE, microfluidics, etc...



» **Wall-jet cell**. The inlet flow is perpendicular to the working electrode surface.

» Standard **fluidic ports** ($\frac{1}{4}$ " - 28 UNF) with inlet channel of 0.5 mm I.D.

» **Low dead-volume** (internal volume <500 nL). The cell volume is limited by an O-ring (2 or 3,5 mm I.D.).

» **High sensitivity** electrochemical measurements.

» **Low sample** requirements (microvolume < 20 μ L).

Add-Ons For AIO cell



Different [Flow-cell](#) and [Batch-cell add-ons](#) in **PMMA** (standard) and **PEEK** (on demand) are currently available for using in combination with the AIO platform and all standard (10 x 6 mm) thin-film (micro)electrodes.

» Methacrylate Add-ons

Standard add-ons are manufactured in methacrylate. PMMA is a suitable material for most of the analytical applications.



» Batch-cell Add-ons

- ❑ [Ref. BC-PMMA-5,0](#). Compatible with thin-film (micro)electrodes / IDμElectrodes with 2 or 3,5 mm diameter electrochemical cell. The cell is sealed with a 5 mm I.D. O-ring.



» Flow-cell Add-ons (wall-jet)

- ❑ [Ref. FC-PMMA-2,0](#). Compatible with thin-film (micro)electrodes with 2 mm diameter electrochemical cell. The cell volume is limited by a 2 mm I.D. O-ring.
- ❑ [Ref. FC-PMMA-3,5](#). Compatible with thin-film IDμElectrodes with 3,5 mm diameter electrochemical cell. The cell volume is limited by a 3,5 mm I.D. O-ring.

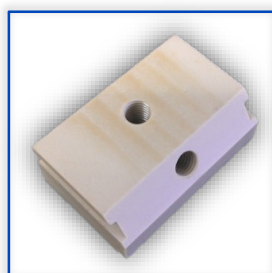
» PEEK Add-ons

Add-ons are also available in PEEK (polyether ether ketone) on demand. PEEK offers advantages for applications where high mechanical and chemical resistance is required.



» Batch-cell Add-ons

- ❑ [Ref. BC-PEEK-5,0](#). Compatible with thin-film (micro)electrodes / IDμElectrodes with 2 or 3,5 mm diameter electrochemical cell. The cell is sealed with a 5 mm I.D. O-ring.



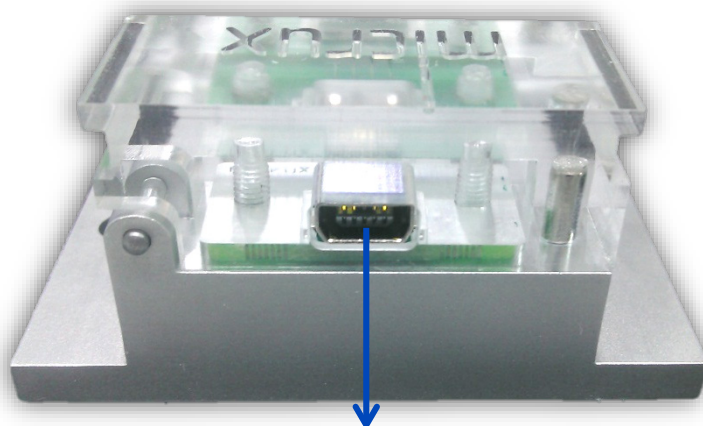
» Flow-cell Add-ons (wall-jet)

- ❑ [Ref. FC-PEEK-2,0](#). Compatible with thin-film (micro)electrodes with 2 mm diameter electrochemical cell. The cell volume is limited by a 2 mm I.D. O-ring.
- ❑ [Ref. FC-PEEK-3,5](#). Compatible with thin-film IDμElectrodes with 3,5 mm diameter electrochemical cell. The cell volume is limited by a 3,5 mm I.D. O-ring.



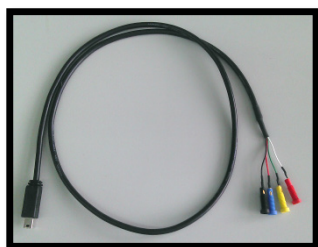
» AIO-cell instrument-interfacing

» AIO-cell interfacing



Integrated easy-to-use connector (miniUSB-type connector) with pogo-pins

» Universal cable

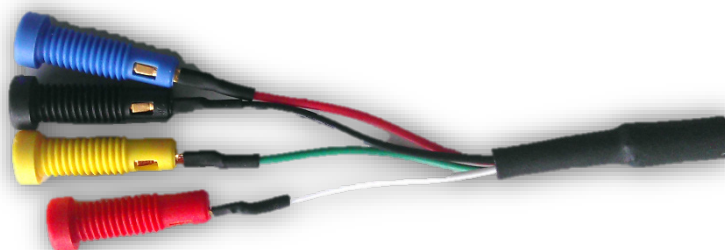


The **All-in-One cell** is supplied with an **universal cable** compatible with any commercial electrochemical instrument.



miniUSB to AIO-cell

Female/male banana plug to instrument



Plug to instrumentation may be available in other format under previous request.



Mora-Garay Industrial Park · Juan de la Cierva, 2C, Bldg. # 6
33211 · Gijón (Asturias) · SPAIN

Phone/FAX: +34 984151019

E-mail: info@micruxfluidic.com

Web: www.micruxfluidic.com

